

# How to re-enable the Teams application in Google Chrome

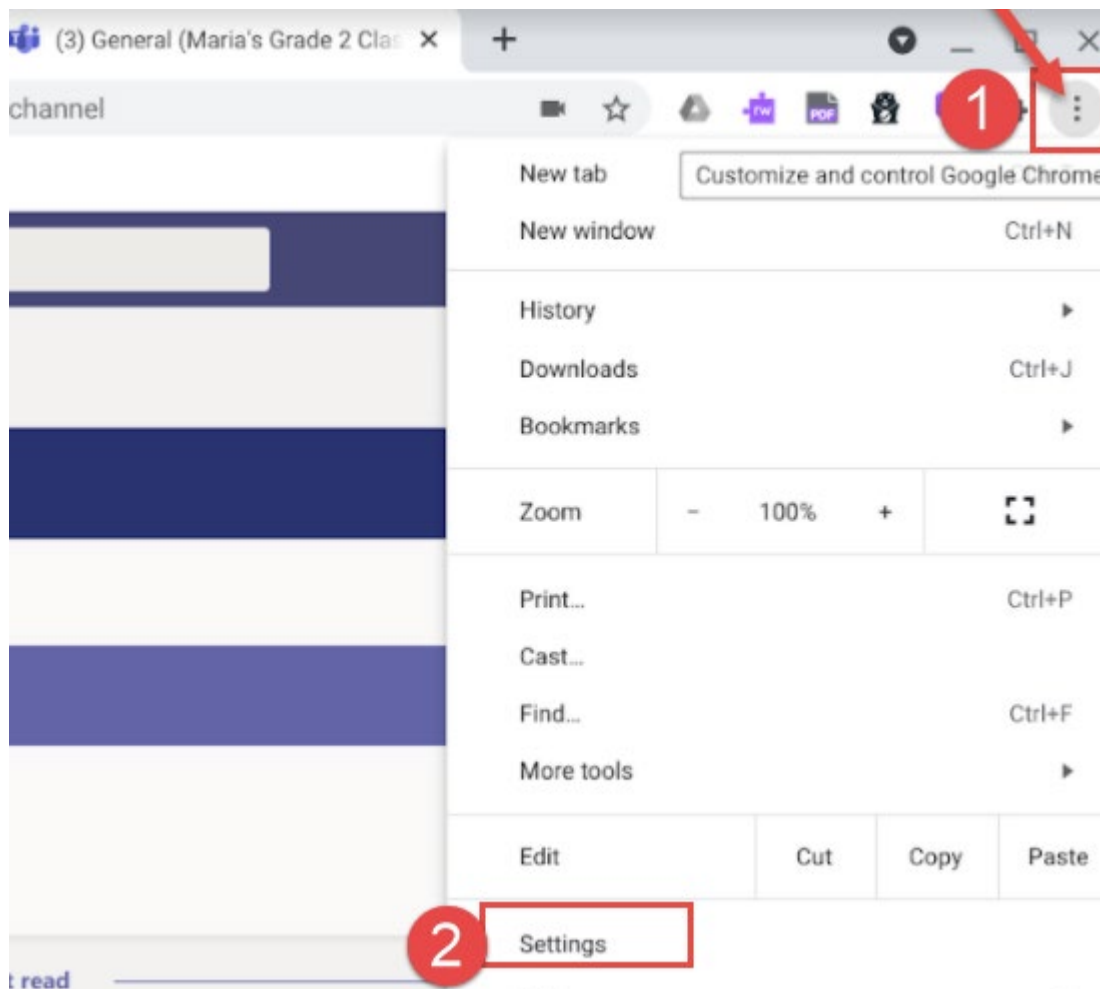
If you are receiving the following pop up, please follow the below instructions.



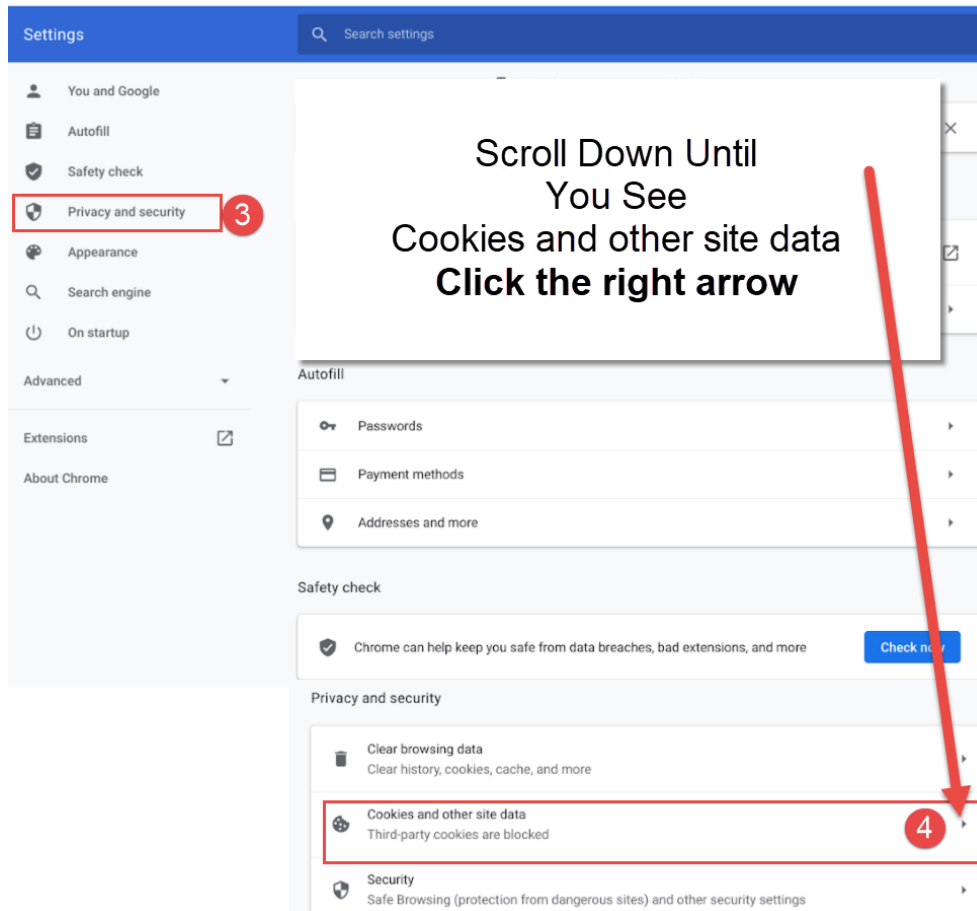
To re-enable the application the tab needs to be refreshed.

I'm back

1. Click the Google Chrome menu ☰
2. Click **Settings**

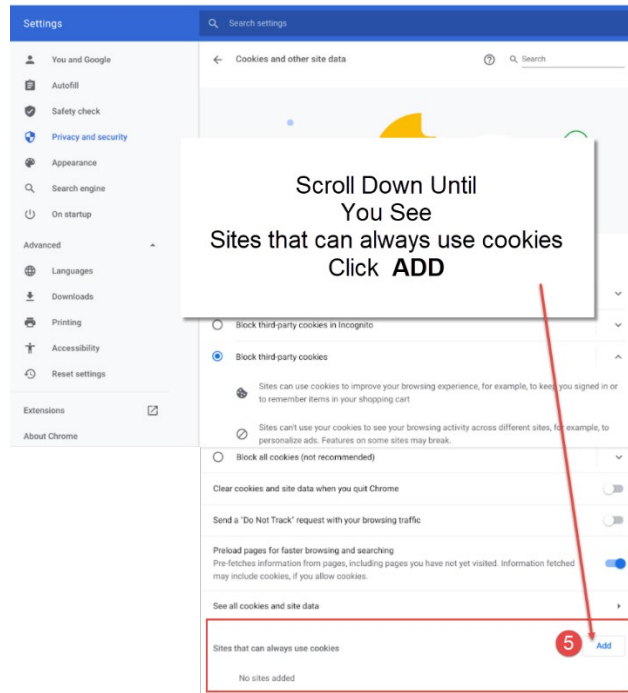


3. Click **Privacy and security**. Scroll Down until you see Cookies and other site data.
4. Click the right arrow ▶



Scroll Down Until you see Sites that can always use cookies.

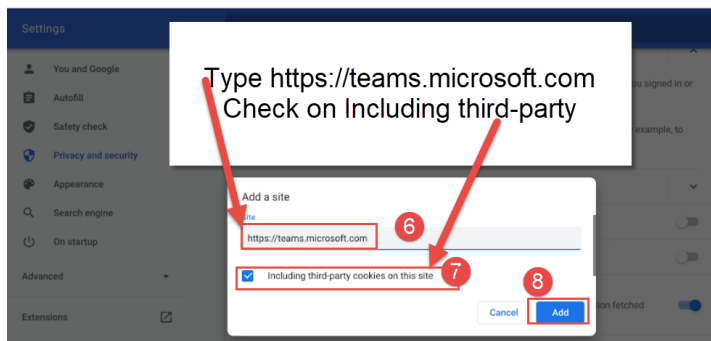
5. Click **Add**










6. Type <https://teams.microsoft.com>

7. Check on **Including third-party cookies on this site.**

8. Click **Add**



9. Close Google Chrome and try signing into Teams.

<b>General Questions Surrounding Virtual School</b> <b>Elementary:</b> Sara Wellwood / Mary Jane Jarvis <b>Secondary:</b> Steve Ward	<b>Student and Family Technical Help</b>
 Virtual School web page for information, visit: <a href="https://bit.ly/2G4gRQY">https://bit.ly/2G4gRQY</a>	 <b>Technical</b> web page to view help documents for guidance on common topics. <a href="https://bit.ly/2ZVNUh3">https://bit.ly/2ZVNUh3</a>
 Elementary: <a href="mailto:virtualk8@limestone.on.ca">virtualk8@limestone.on.ca</a>  Secondary: <a href="mailto:virtual912@limestone.on.ca">virtual912@limestone.on.ca</a>  <b>General Questions:</b> 613.817.9322	 <a href="mailto:LearningAtHome@limestone.on.ca">LearningAtHome@limestone.on.ca</a>  <b>Technical Questions:</b> 613.417.3559 Monday to Friday, 7:30 a.m. to 4:30 p.m.